

Information Handbook



**Christian Health Services
of Papua New Guinea**

Our Motto

“To serve with love, dedication, compassion and commitment in humility”

Our Vision

Church Health Services as a constitutional organisation will strive to carry out the healing ministry of Jesus Christ by providing quality and affordable health care for all people

Our Mission

Inspired by the Gospel of Jesus Christ, we strive to provide the best health care with dignity, respect, compassion and dedication in partnership with the government and non-government health care providers through health promotion, training, clinical care and evidence based research work

CHS ACT

Christian Health Services of Papua New Guinea has been recognised as an Act of Parliament No.16 of 2007 and certified on 15/11/2007



AN ACT

entitled

Christian Health Services of Papua New Guinea Act 2007,

Being an Act to provide for the Christian Health Services through government funded Christian health agencies,

MADE by the National Parliament to come into operation in accordance with a notice, in the National Gazette, by the Head of State, acting with, and in accordance with, the advice of the Minister.

HISTORY OF CHRISTIAN HEALTH SERVICES

Historically, the churches have always played an important role in health work in Papua New Guinea. The provision of basic health care, support and assistance was first recognized by the wives of the first missionaries in the 1870s and later by the first trained nurse from the Lutheran Red Cross Missionary in Madang in 1894.

Since then up until now, Churches through their different missions to PNG (Anglican, Catholic, Lutheran, Baptist, Adventist and Methodist) have played a leading role in the provision of health care. From the door steps of the missionary houses to the little clinics came some of the hospitals and health centres now seen in various parts of the country.

The early colonial administration encouraged this work and as early as 1920 provided “grants in aid” to assist churches to develop and expand their health services. The PNG Government has continued to provide financial support through grants and today provides almost 80-100% (in most cases) of Church health finances.

After PNG gained independence in 1975 most of the church health facilities were handed over to the national churches by the departing overseas missions and their missionaries. As this was done without proper planning, the question of sustainability and continuity of health work left behind was not seriously thought through.

In order to fast-track the transition from missionary management of church health services, to a structured national

setting, Christian Health Service of PNG started training Community Health Workers (CHW) to manage the curative and preventive health care at the village level. At the same time many of the middle cadre of Health Workers and nurses were trained to cover the vacancies left by the departing missionary nurses/workers.

Training of health workers throughout PNG continues to be a key focus of Christian Health Services.

SUMMARY

12th September 1965	First Inter-Mission Medical Conference held at Dogura
12-23th August 1968	Second meeting at Lutheran Mission, Lae. The name changed to "Combined Churches Medical Council"
May 1972	Dr Hakon Hellberg from World Council of Churches came to PNG to study for a year the relationship of health service provided by Churches and health service provided by the government
21-28th July 1972	Churches Medical Council met in Lae, an new constitution was formed
21-26 July 1973	CMC met in Port Moresby and a permanent Church/Government Health Liaison Officer was selected by the Churches based in Port Moresby. Dr. Peter Strang was the first person to fill this position from 1973 to late 1975
1975-1978	Dr Clifford Smith served as C/GHLO
May 1978 - 1980	Sr. Merla Garrett

1980-1982	Rev. Ken Shakespeare
Jan 1982 – Dece 1982	Decentralisation resulted in the position of C/GHLO being abolished at the National Level
1983-1984	Sr. Lesley Slade followed by Bro. Xavier Nicholson filled in as part time executive officer in Port Moresby upon request from the Health Department for someone that could be contacted regarding CMC work.
November 1984	Mr Simon Sopia was employed as the first full-time Executive Officer for CMC. An office space was provided at the Health headquarters at Hohola, NCD
13th January 1986	Mr Pawa Warena began work as the Executive Officer of CMC, PNG

WHAT IS CHRISTIAN HEALTH SERVICES

Christian Health Services (PNG) or CHS formerly Churchers Medical Council of PNG Inc is the organisation representing all churches involved in the health ministry at the provincial, regional and national level. It is recognised by the National Government as the body representing all the churches providing health service in partnership with the Government.

At the national level, the CHS Executive Director liaises with the National Department of Health, other government agencies, non-government agencies and other partners and stakeholders in health to carry out functions/roles as mandated by CHS Act and Constitution.

At the provincial level, the Executive Director liaises with the provincial health authority depending on the number of church

agencies involved with health work in a province. There may be a church government health liaison officer elected by provincial or regional CHS to report to the Executive Director on all health work at the provincial level.

CHS focuses mainly on two main areas:

1. Provision of Health Care Services
2. Training School: Nursing and Community Health Workers including Post Graduate studies.

Christian Health Services works in partnership with the Government through the Department of Health in achieving all goals and objectives of the National Health Plans and Policies.

Christian Health Services provides almost eighty percent of Primary Health Services throughout Papua New Guinea in the rural areas and CHS also operates more than sixty percent of General Nursing and Community Health Workers Training in PNG.

OBJECTIVES:

1. To encourage and develop the highest level of Health; that is the physical, social, psychological and spiritual aspects for all people supporting the framework of the national and provincial health policies.
2. To encourage co-operation between member organisations.
3. To give support to health workers and member organisations by providing means of worship, fellowship and Christian witness and the sharing of experience and knowledge in a common ministry of healing within PNG and the world.
- 4 To promote co-operation between the churches and the government in matters of common interest.

5. To give special consideration to the best possible ways of providing Community Health Services, training programs, joint planning and sharing of resources.
6. To promote the ideas of:
 - Full Human development,
 - The caring community
 - Social Justice
 - self-reliance

Christian Health Services encourages the Churches involved in health service to see their contribution in the following areas:

- A service which emphasises preventative and primary health care for all people.
- Commitment and dedication of continuity of services.
- Meeting the health needs of people in rural areas.
- Encourage self-reliance through involvement of the community in providing better health services.
- Training of health workers and manpower in rural areas.
- Finding new or alternative approaches to solving health issues.
- Active co-operation and partnership with the Government and CHS through the National Department of Health in planning and achieving objectives and targets of the National and Provincial health plans.

CHS MEMBERS SINCE 1989

Anglican

Baptist

Christian Brethren Church

Christian Union Mission

Evangelical Bible Church

Evangelical Lutheran Church of PNG

Evangelical Church of PNG
Hela Gutnius Christian Church
Independent Baptist Church
South Sea's Evangelical Church
Faith Mission
Four Square
Evangelical Church of Manus (ECOM)
Gutnius Lutheran
Church of the Nazarene
Christian Outreach Centre
Open Bible Church
Salvation Army
Seventh Day Adventist
United Church
Hela Gutnius Church
Trinity Baptist
Wesleyan Baptist Church
PNG Bible Church
Christian Apostolic Fellowship
CORC
Gulf Christian Services
Four Square Living Light
New Members:
Assembly of God (AOG)
Sepik Christian Mission

Associate Members & Partners

Christian Leaders Training College
Hope World Wide (PNG)
Summer Institute of Linguistics
Medical Ambassadors Association (Canada)
Australian Government (DFAT)
Mission Aviation Fellowship

Major partner: National Department of Health

SERVICES PROVIDED BY CHS

Preventative and Curative Care are the major health services provided in CHS hospitals, health centres, health sub-centres and Aid Posts throughout the country. CHS through its health, Community Health Posts ministry also works in communities.

Many churches are also involved in special programs in the community including primary and community based health care. The programs focus on health and spiritual well-being of a person.

TRAINING

In 1989, churches were operating seven General Nursing schools and seventeen Community Health Worker Schools. To date, these are the current health worker training schools which CHS oversees.

School	Church Affiliation	Province
Braun CHW Training School	Lutheran	Morobe
Gaubin CHW Training School	Lutheran	Madang
Kapuna CHW Training School	Gulf Christian Services	Gulf
Onamuga CHW training School	Salvation Army	Eastern Highlands
Rumginae CHWTS	Evangelical Church of PNG	Western
Kukumanda CHW Training School	Four Square	Enga

Salamo CHW Training School	United	Milne Bay
St Margarets CHW Training School	Anglican	Oro (Northern)
Tinsely CHW Training School	Baptist Union	Western Highlands
Telefomin CHW Training School	Baptist Union	Sandaun
Tombil CHW Training School	Seventh Day Adventist	Jiwaka
Lutheran School of Nursing	Lutheran	Madang
Nazarene School of Nursing	Nazarene	Jiwaka
St Barnabas School of Nursing	Anglican/United/Catholic	Milne Bay
Pacific Adventist University (SOPAS)	SDA	Central

All Catholic health training schools which CHS facilitated up until 2016 are now being managed by National Catholic Health Services. These are: Lemakot (New Ireland), Raihu (Aitape), Kumin (Mendi) and St Gerald's (Central) Community Health Worker Training Schools and Vunapope School of Nursing.

HOW TO BECOME A MEMBER OF CHS

Full Time Membership

Churches or Christian organisations desiring to become full time members of the PNG Christian Health Services must be actively involved in the health ministry and have four (4) fully operating health facilities or a health worker training school recognised by the Nursing Council or Medical Board to apply for full membership to CHS and should follow this process:

1. Apply in writing with an expression of interest letter and application letter to the chief executive officer of CHS;
2. Include a profile summary of their Church organisation including references from a member organisation from the PNG Council of Churches;

Obtain a letter from the Provincial Health Authority CEO/ Secretary on the status of health service delivery in that province(s) and approval to partner with churches on providing health services in that province.

Associate Membership

Any other Church or Christian organisation who are not directly involved in the health ministry but are interested in health work or in supporting CHS may apply for associate membership through this process:

1. Submit a letter of application to the executive director of CHS stating your interest and purpose of wanting to join as an associate member

2. Submit with the application letter a reference from a member of the PNG Council of Churches
 - Membership of full time and associate members are voted during a constituted annual meeting of the CHS board Members.
 - Acceptance of membership requires a two thirds majority of eligible voters present
 - The CHS Board reserves the right to terminate the membership of any member if they are found to have acted contrary to the guidelines set by the Board. This will be made after two months of notice to the council and voted by which the outcome is by majority.

Membership Fees

- (1) The CHS Executive Director shall decide the annual membership fees.
- (2) Membership fees will be due 1 January each year.
- (3) The Treasurer shall send notice of fees due to Members before 1 January of the year in which they are due.
- (4) Registration Fees must be paid 30 days before the Annual General Assembly in order for the Member to seat voting delegates at the Annual General Assembly.

Membership fees apply to full time CHS members and associate members

- Membership fees are paid annually before the CHS Annual Conference.

- Membership fees are worked out by the CHS Executive Director and all members and associate members are informed.
- Membership fees must be paid in advance in order cast votes during the annual conference
- Non-payment of membership fees will result of loss of member votes during the CHS Annual Conference

Training Schools

- All Church run Training Schools must register every year before the CHS Annual Conference
- An annual membership fee must be paid in full before the CHS annual conference

ANNUAL GENERAL CHS CONFERENCE

Once a year, a conference is held where representatives of all churches meet together for as long as a week (the time frame is agreed by the CHS executive board members) to share their successes, challenges, medical information pertaining to health and to seek spiritual inspiration.

Guest speakers from different agencies that deal with health work in their line of duties may be invited to present during the conference.

A time is set during the conference where meetings are held for the four regions in PNG, church groups, Health Managers and also for the CHS Training Schools.

The Annual General Meeting shall elect Alternate Members of Executive for each region, and for Secretary and Treasurer.

CHS has the right to nominate two members to the Nursing Council of PNG to represent Church Health Services on the Nursing Council Board. These nominations are made by delegates at the Annual Conference.

The Executive

During the Annual Conference, an executive committee known as the CHS Executive Board members made up of one representative from each of the four regions are elected to serve for a term of two (2) years.

The Executive Board meets four times a year or when needed.

The Annual General Conference shall elect to the Executive Committee at least one representative from each of the following regions: –

- (a) New Guinea Island
- (b) Momase
- (c) Highlands
- (d) Southern.

The Executive shall consist of –

- (a) The Chairman
- (b) Vice –Chairman
- (c) Secretary
- (d) Treasurer; and
- (e) Four (4) regional committee members.

Voting

The number of voting delegates shall be based on the number of health workers employed by each member organization, according to the following formula: –

4 or more health workers	1 delegate
25 or more health workers	2 delegates
50 or more health workers	3 delegates
100 or more health workers	4 delegates
300 or more health workers	5 delegates
500 or more health workers	6 delegates
750 or more health workers	7 delegates
1,000 or more health workers	8 delegates

Voting delegates to the business sessions are appointed by the member churches with the number of delegates per church based on the amount health work done by the church agency. A church must have no more than six (6) delegates.

Regional CHS Meetings

Regional CHS meetings are held every year for the four different regions in the country usually before the annual CHS Conference. The chairperson for each region is responsible for organising and planning their regional meetings with health managers from the different church agencies in the provinces in that region.

Presentations and discussions are held by different church agency representatives and resolutions are made which are presented at the CHS Annual Conference.

One or two members from the CHS Secretariat will attend each of the regional meetings to present an overall summary of work done at the Secretarial level.

SUMMARY OF CHURCH AGENCIES BY PROVINCE

Western
Evangelical Church of PNG
Gulf
Gulf Christian Services
United
Salvation Army
Central
Salvation Army
SDA
United
Milne Bay
Anglican
United
Enga
Baptist Union
CAF
Four Square
Gutnius Lutheran
Western Highlands
Anglican
Baptist Union
CAF
Christian Leaders Training Institute (CLTC)

EBC
Lutheran
Nazarene
PNG Bible Church
SDA
Morobe
EBC
Lutheran
Nazarene
Madang
EBC
Lutheran
Nazarene
East Sepik
ECOM
Lutheran
SDA (Sepik Christian Mission)
SSEC
Nazarene
Assemblies of God
Manus
ECOM
New Ireland
United

West New Britain
Anglican
United
Lutheran
Simbu
Anglican
COC
Four Square
Hope World Wide
Lutheran
Salvation Army
Seventh Day Adventist
Nazarene
East New Britain
Seventh Day Adventist
United
Eastern Highlands
Independent Baptist
EBC
Faith Mission
Four Square
Lutheran
Open Bible Mission
Salvation Army
Seventh Day Adventist
Summer Institute of Linguistics (SIL)

National Capital District
CMC
Four Square
Hope PNG
Nazarene
Seventh Day Adventist
AROB (North Solomon)
United
Northern (Oro)
Anglican
EBC
Salvation Army
Southern Highlands
CBC
Christian Union Mission (CUM)
ECPNG
Lutheran
PNG Bible Church
Tiliba Church
United
Weslyn
Sandaun (West Sepik)
Baptist
CBC
Seventh Day Adventist

Church Health Services provides more than seventy percent of health care services in the country.

The CHS Church Health Agencies operate health facilities in their respective provinces including the most rural and remote areas based on geography of villages and catchment population.

These include:

Level 1: Aid post

Level 2: Community Health Post (CHP)/Health Sub Centre (HSC)

Level 3: Health Centre (HC)/Urban Clinic (UC)

Level 4: District Hospital

Level 5: Provincial Hospital

CHS DISTRICT HOSPITALS (Level 4)

CHS has fourteen (14) District Hospitals run by different Church Agencies.

The Kudjip Nazarene Hospital has since been upgraded to a level 5 provincial hospital in 2017.

Hospital	Province	Church Agency
Rumginae	Western	ECPNG
Balimo	Western	ECPNG
Kapuna	Gulf	Gulf Christian Services
Kikori	Gulf	Gulf Christian Services
St Margarets (proposed)	Oro	Anglican
Gaubin	Madang	Lutheran
Yagaum	Madang	Lutheran
Braun	Morobe	Lutheran
Etep	Morobe	Lutheran
Telefomin	Sandaun	Baptist Union
Tinsley	Western Highlands	Baptist Union
Kompam	Enga	Baptist Union
Mambisanda	Enga	Lutheran
Kudjip Nazarene Provincial Hospital (level 5)	Jiwaka	Nazarene

Health Workers at CHS health facilities are trained professionals who are the forefront of providing health care service.

Health Workers are trained Community Health Workers, Nursing Officers, Health Extension Officers, Doctors, specialised medical doctors and Allied Health Workers.

The PNG Government has allocated a total number of 3,290 validated funded positions for Church Health Services throughout the country.

Out of this number, Christian Health Services has an allocated ceiling of 1,932 funded positions which are distributed to church health agencies and their facilities. However, the entire CHS workforce exceeds 3,000.

CHS SECRETARIAT

The CHS Secretariat located in Port Moresby is the office that oversees all Church Health Services in the country and has a total of twelve (12) full time staff working in Management, Human Resources, Health Promotion, Monitoring & Evaluation, Information Technology, Media Communication, Admin & Finance and Projects, with opportunity for growth and expansion.

The CHS Secretariat is managed by the Executive Director.

The Secretariat supports a number of programs the main one being Health Promotion

Health Promotion

CHS has realised that individuals, families and the communities are not been effectively empowered thereby enabling them to control, own and sustain the status of their own health. Therefore, CHS had established a Health Promotion Section and rolled out the health promotion program using a wholistic approach since 2014.

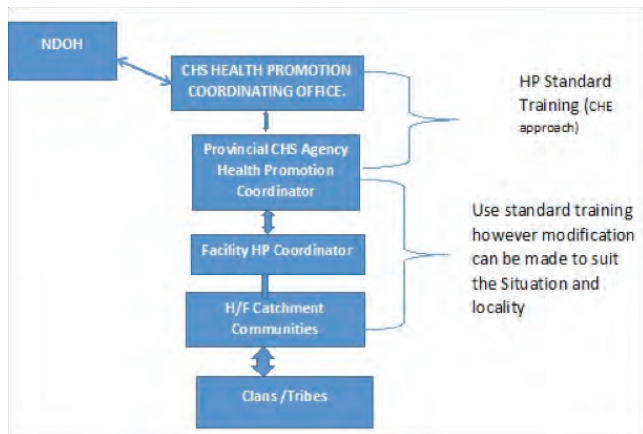
Under the Health Promotion Section, CHS is using the EDEN Approach

EDEN means: **Effective Development Empowering the Nation.**

The four main pillars of EDEN are:

1. Wholistic
2. Community Ownership
3. Development
4. Multiplication

The EDEN roll out Strategy



Mission

To be strategic facilitators of a network of like-minded PNG agencies and health workers who work towards whole and healthy communities living in harmony with God, each other and the environment.

EDEN exists to challenge and motivate member organizations to model Christ's example of active compassion to the whole person through a seamless integration of spiritual growth, disease prevention and sustainable community-owned development.

Core Values

- **Prayer:** Strategic prayer is an essential prerequisite for success in any program
- **Christian Unity:** Promotion of unity and cooperation between all denominations of Christian churches.
- **Dignity:** All people have intrinsic value as equally made in the image of God, and therefore deserve opportunity to know Him and to develop with dignity.
- **Integration:** We emphasize Christian Biblical integral development, integrating the physical, social, spiritual and mental components of the person
- **Sustainable Development:** Long-term solutions focus on development rather than relief, disease prevention rather than cure, equipping and empowering people to change themselves rather than doing it for them.
- **Community Ownership:** Programs are owned by the people and built on local initiative, as demonstrated by volunteerism and wise use of local resources.
- **Multiplication:** Training people to train others using concepts and appropriate technologies that are transferable.

Goal

As representing organizations grounded in Biblical faith, is to facilitate deep-rooted change that fosters compassion, equality and justice in communities and that impacts health and development for generations to come.

Objectives:

- Establish CHS Health promotion department with personals and with member agencies working cooperatively in order to meet the government's health plan and development goals using the relevant KRA Strategies.
- Increase interest, ownership and participation in EDEN's Healthy islands – CHE 'strategy will result in partnerships between CHS and Health departments at the provincial level.
- Standard training and materials will be developed based on the concepts of holistic, self – reliance and community ownership.
- Ongoing training and mentorship and Master Trainers will encourage the delivery of quality integrative community Health and development.
- Gather statistical evidence from the holistic programs for recognition by National Division of Health, resulting in sustainable funding.

The CHS Secretariat strives to uphold its core mission and vision with the objective of serving the people in the health ministry and thus strives to serve with love, dedication, compassion and commitment in humility”

For further information about CHS, you can contact:

The Executive Director
Christian Health Services
P O Box 3269, Boroko
National Capital District
Ph: 325 2362/325 3368
E: info@chspng.org.pg
W: www.chspng.org.pg



Christian Health Services

P O Box 3269, Boroko. National Capital District

Ph: 325 2362/325 3368

E: info@chspng.org.pg | W: www.chspng.org.pg